



Nusa Dua Beach  
Hotel & Spa



## ABOUT US

Nusa Dua Beach Hotel & Spa is located on Bali's southern peninsula, just 15 minutes from Ngurah Rai International Airport via the Bali Mandara toll road. The hotel has welcomed kings and queens, presidents and other dignitaries over the years. Each guestroom is decorated with authentic Balinese furnishing and offers stunning views of manicured tropical gardens or vistas of the ocean from the terrace or balcony.

The 5-star Nusa Dua Beach Hotel & Spa, Bali features 3 outdoor pools and direct beach access. The resort resembles a Balinese palace with complete Spa facilities, 5 Restaurants and 3 Bars, meeting rooms and an outdoor theatre, Wi-Fi is available throughout the hotel.



# ACCOMMODATION

Accommodation starts from the 34sqm Deluxe Rooms. Tastefully-furnished for a relaxing stay, rooms blend elements of Balinese artistry with modern comforts to ensure that every conceivable need has been anticipated. Elegantly-appointed for a rewarding getaway, Premier Rooms celebrate Balinese luxury. For a much more heightened experience, the Palace Club accommodations provide the ultimate indulgence of Balinese hospitality. All Palace Club guests have access to the Palace Club Lounge and enjoy a range of privileges that will enhance their stay in this exclusive surrounding.



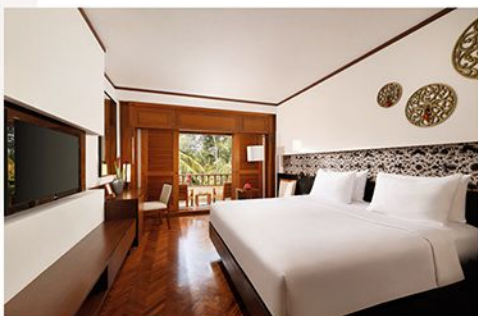
Room Type	Number of Rooms	Rooms Size	Type of Bed	Maximum Capacity
Superior Room	184	34 m2	King Size or Twin	2A or 2A and 1C
Family Room for 3	12	45 m2	King Size and One single bed	3A or 2A and 1C
Family Room for 4	8	70 m2	King Size and Twin	4A or 2A and 2C
Family Room with Bunkbed	10	48 m2	King Size and Bunk Bed	2A and 2C
Premier Room	82	40 m2	King Size or Twin	2A
Palace Club Room	42	56 m2	King Size or Twin	2A
Palace Club Lagoon Room	13	56 m2	King Size or Twin	2A
Palace Club Suite	23	80 m2	King Size	2A
Palace Club Lagoon Suite	2	80 m2	King Size	2A
Batur Suite 2-Bedroom suite	1	132 m2	King Size and Twin	4A or 2A and 2C
Agung Suite 2-Bedroom suite	1	166 m2	King Size and Twin	4A or 2A and 2C
Nusa Dua Suite 2-Bedroom duplex suite with private pool	1	249 m2	King Size and King Size	4A or 2A and 2C
The Royal Residence 2-Bedroom duplex suite with private pool	1	376 m2	King Size and King Size	4A or 2A and 2C

## Palace Club Privileges

- Butler at the Palace Club Lounge from 6.30am - 11.00pm
- Private check in and check out at the Palace Club Lounge
- Late check out until 3:00pm on day of departure.
- Welcome drink & cold towel upon check in at Palace Club Lounge
- Welcome fruits & flowers upon arrival
- Breakfast 6.30am-10.30am at Palace Club Lounge
- Afternoon Tea 3.00pm-5.00pm at Palace Club Lounge
- Evening Cocktail with assorted snacks 5.30pm-7:00pm at Palace Club Lounge
- Complimentary non-alcoholic beverages 11.00am-11.00pm of Palace Club Lounge
- Daily in room turn down services
- Complimentary pressing service for 4 (four) pieces on arrival day
- Complimentary in room bottled water refreshed daily
- Butler upon request for Suites (Nusa Dua Suite & Residence Suite 7:00am 10.00pm)

## Palace Club Facilities:

- Complimentary computers & printer available at Palace Club Lounge
- WIFI at the Palace Club Lounge and guest's bedrooms
- Books collection (mini library) available at Palace Club Lounge
- Magazines at the Palace Club Lounge
- Complimentary access to the Sport Centre, Sauna, Steam room, Lap Pool and Jacuzzi



# FOOD & BEVERAGE DELIGHTS



## WEDANG JAHE RESTAURANT

Surrounded by a tropical lotus pond, Wedang Jahe Restaurant is the idyllic setting for breakfast with endless choices of international and local dishes. Opens daily for Breakfast, 6.30 am - 10.30 am Seating capacity: 280 persons



## TAMARIND MEDITERRANEAN RESTAURANT

An extra ordinary Bamboo Thatched Roof Restaurant with panoramic views of the Indian Ocean. It offers a diverse selection of Western favorites and Asian dishes. Opens daily for Lunch and Dinner, 12.00 noon - 10.30 pm Seating capacity: 145 persons



## CABANA

Step into our charming oasis of poolside haven and relish yourself in tranquility. Savor our Chef's Latin American-inspired dishes that celebrate culinary excellence and cultural richness. Opens daily for Lunch, 11.00 am - 6.00 pm Seating capacity: 32 persons



## THE LOBBY BAR

This cozy lounge and terrace overlooks the resort grounds and ocean. Hang out in this cool corner with innovative signature cocktails, beer and wines. Opens daily, 10.00 am - 01.00 am

## MAGURO ASIAN BISTRO

Stylish Asian Bistro offers guests a culinary tour of Asia's most flavorful dishes. Opens daily for Lunch and Dinners, 12.00 noon - 10.30pm Seating capacity: 48 persons



## RAJA'S BALINESE CUISINE

The resort's award-winning restaurant Raja's features authentic Balinese cuisine in an elegant fine dining atmosphere. Halal certified. Opens for dinner from 5.30pm-10.30pm Seating capacity: 70 persons



## CHESS BEACHFRONT BAR

Located by the beachfront, this casual bar serves as an oasis for those seeking refuge from the heat of the sun. Opens daily, 10.00 am - 12.00 am Seating capacity: 70 persons



## POOL BAR

This haven is perfectly placed in the centre of our main swimming pool so you can sip without interrupting your dip. Opens daily, 10.00 am - 7.00pm



## LIVE ENTERTAINMENT STARTS AT 8.00PM ON MONDAY, WEDNESDAY AND FRIDAY



## Culture Enchantment KECAK with Balinese Fusion Food

Monday at Beach Garden  
Join us for a spectacular array of flavors at our buffet dinner, while being captivated by the cultural harmony that defines this island



## Symphony of Bali LEGONG DANCE with Indonesian & International Cuisine

Wednesday at Budaya Cultural Theatre  
Dine under the stars and witness the night come alive with the grace and beauty of Balinese culture through enchanting dance and captivating moments



## Taste of Bali FIRE DANCE EXTRAVAGANZA with International Buffet & Seafood BBQ

Friday at Beach Garden  
Be captivated with a spectacular display of Balinese fire dance and culinary adventure where an array of flavors awaits your palate.



## WEDDING & MICE

For unforgettable wedding celebrations, the resort is graced with a number of beautiful gardens and a white sandy beach. Choose from the Wedding Bale Garden or the beachfront overlooking the ocean to make your wedding simply perfect.

The resort welcomes groups of all sizes for their meetings or conferences with a ballroom, six meeting rooms and one large outdoor amphitheater. Catering specialists and an award-winning culinary team are on hand to cater to clients' needs. A full range of audio-visual equipment and a business center are also available.

Dinner at 7.00pm Show at 8.00pm (subject to weather conditions)



## VENUE CAPACITY

Room Name	Surface	Height Min	Width/Length	Theatre	Class Room	Royal Square	U-Shape	Banquet/ Round Table	Cocktail
Keraton Room	336	5.25	16 x 21	350	150	60	110	160	450
Ante Room	68	2.30	7.5 x 9	50	24	16	20	30	50
Keraton Ballroom	404	-	-	400	174	60	110	190	500
Kertogosa Room	540	-	22.5 x 24	225	120	-	-	110	220
Kamason Room	84	3.00	7 x 12	50	36	30	24	32	40
Klungkung Room	60	3.00	7 x 8.5	30	24	16	18	24	30
Garuda Room	111	2.40	6 x 18.5	80	42	40	32	70	80
Nusa Penida Room	84	2.10	6 x 8	20	15	14	14	-	-
Singaraja	72	2.25	12 x 6	40	30	30	24	24	30

## LEISURE FACILITIES

### NUSA DUA SPA

The Nusa Dua Spa offers a complete range of treatments to pamper your body, mind and spirit. From relaxation to energizing body treatments, every element of your spa visit is designed to help you feel rejuvenated and inspired.

It features a fully equipped fitness centre, squash and tennis courts. After your work-out, unwind with a dip in the lap pool, soak in the whirlpool or relax in the sauna.

### RECREATIONAL ACTIVITIES

Sports and cultural programs for both kids and adults include various beach activities such as beach volleyball, canoeing, paddle boarding, scuba diving, snorkeling and many more.

The Gecko Kid's Club is available daily to keep young guests entertained with supervised games such as building sand castles, face painting, weaving and feeding fish as well as cultural activities including Balinese dance lessons, temple visits and dressing up in traditional Balinese clothing.



## OTHER FACILITIES

### IN-ROOM AMENITIES:

- LCD TV with 24-hour cable TV
- Complimentary WIFI
- In-room electronic safe
- IDD telephone
- Hair dryer
- 24 hour Room Service
- Coffee / tea-making facility
- Complimentary bottled water

### FACILITIES & SERVICES:

- 200-meter white sandy beach
- Complimentary Wi-Fi
- Business center
- Laundry and dry cleaning
- Gym and sports center
- Water sports
- Games Room
- Baby-sitting service
- Gecko Kid's Club
- Medical clinic with 24-hour doctor on call
- Lobby Shop - for basic essentials
- Shopping arcade
- Tour and travel counter
- Airport transfer service
- ATM machine
- Hair and beauty salon
- Swimming pools
  - Main pool
  - Lagoon pool
  - Children pool
  - Spa lap pool
- Expansive gardens
- Religious services nearby

Credit cards: Visa, MasterCard, JCB, BCA, American Express and Diners Club.

Check-in time: 3.00pm

Check-out time: 12.00noon



Kawasan Pariwisata Nusa Dua Lot North 4, Nusa Dua 80363, Bali, Indonesia  
 Tel: +62 (361) 771 210 | Whatsapp: +62 811 3972 442  
 Handwritten.Bali.reservation@accor.com | www.nusaduahotel.com | all.com

*Authentically Bali™*